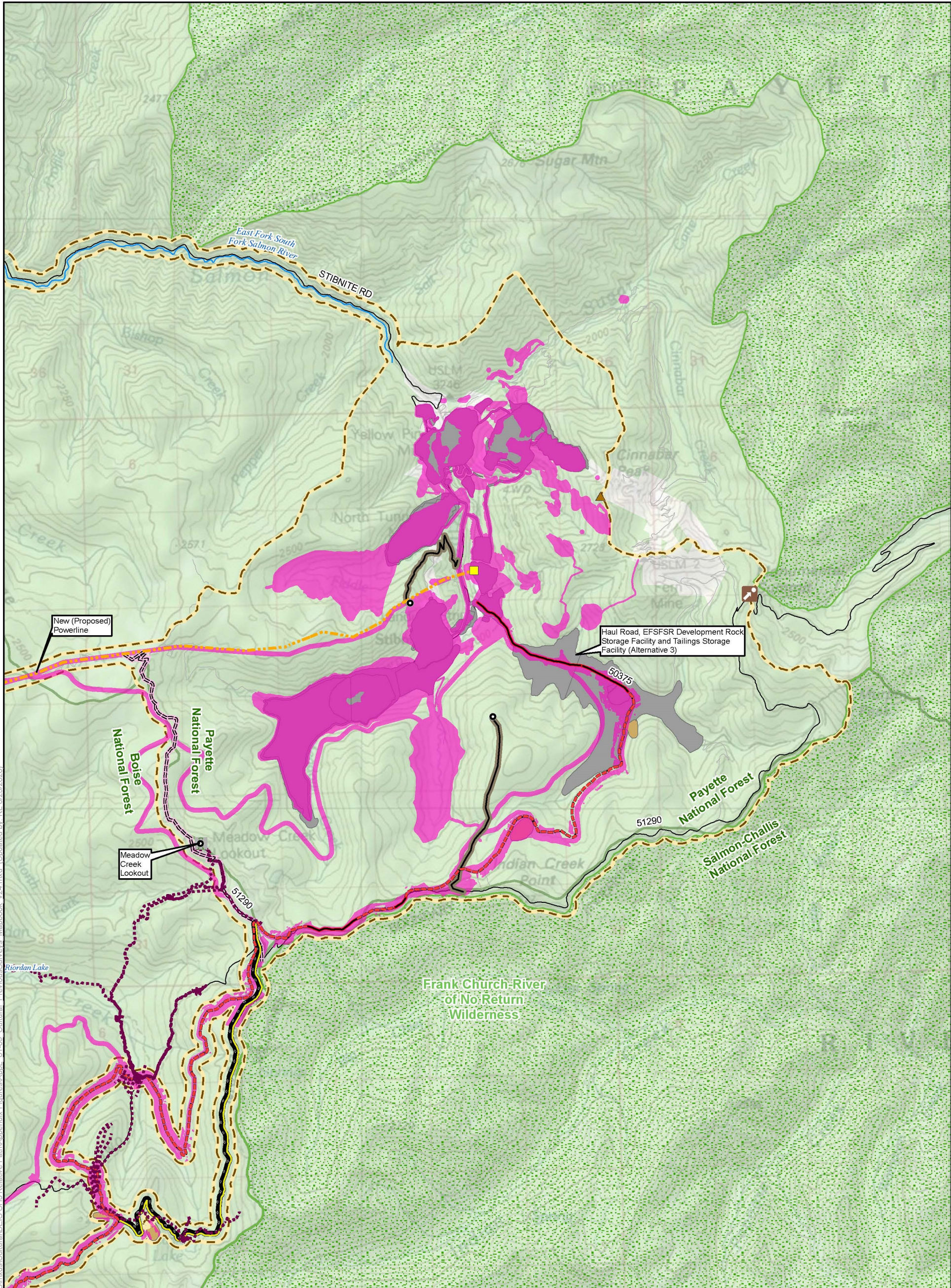


Stibnite Gold Project EIS

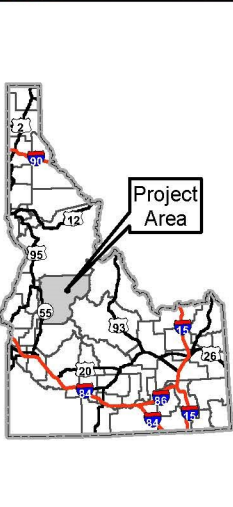
Appendix L

Cultural Resources Previous Survey Mapbooks

This page intentionally left blank.

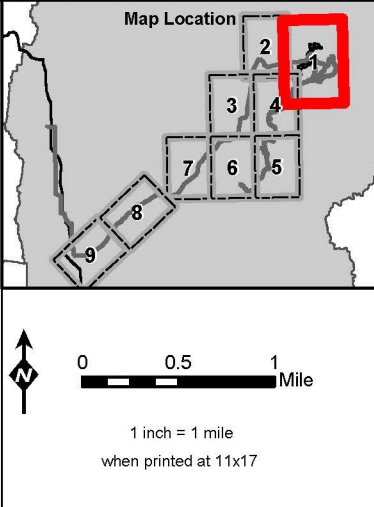


Document Path: M:\Denver_GIS\Projects\60539538_MidasGold\Stibnite\CH3 Relative Path\Appendix Figures\Mapbook v24.mxd (Updated by: RL 6/25/2020)



LEGEND

Cultural Resource Analysis Area	Burntlog Route Borrow Source ****	Monumental Summit	* Project Components are associated with Alternative 1 unless otherwise specified
Previously Surveyed Transects (As of Sept. 2019)	Utilities	Historic NFS Administrative Site	
Previously Surveyed Areas (As of Sept. 2019)	New Powerline	Lookout	*** Not all legend features are visible on this page
Project Components *	Upgraded Powerline	Railroad	Note: The McCall - Stibnite Road (CR 50-412) consists of Lick Creek Road, East Fork South Fork Salmon River Road (East Fork Road) and Stibnite Road
Mine Site	New Substation **	Highway	
Access Roads and Trail System	Existing Substation **	Access Road	
Burntlog Route New	New Communication Tower	Road	
Burntlog Route Upgrade	Existing Communication Tower	Stream/River	
Burntlog Road Riordan Creek Alternative Segment	Cell Tower Option	Lake/Reservoir	
Groomed OSV Route	Midas Gold Offsite Facility	Surface Management Agency	
OHV Trail	Other Features	U.S. Forest Service	
Cell Tower Access	Wilderness	Private	
	County	U.S. Forest Service	
	City/Town		

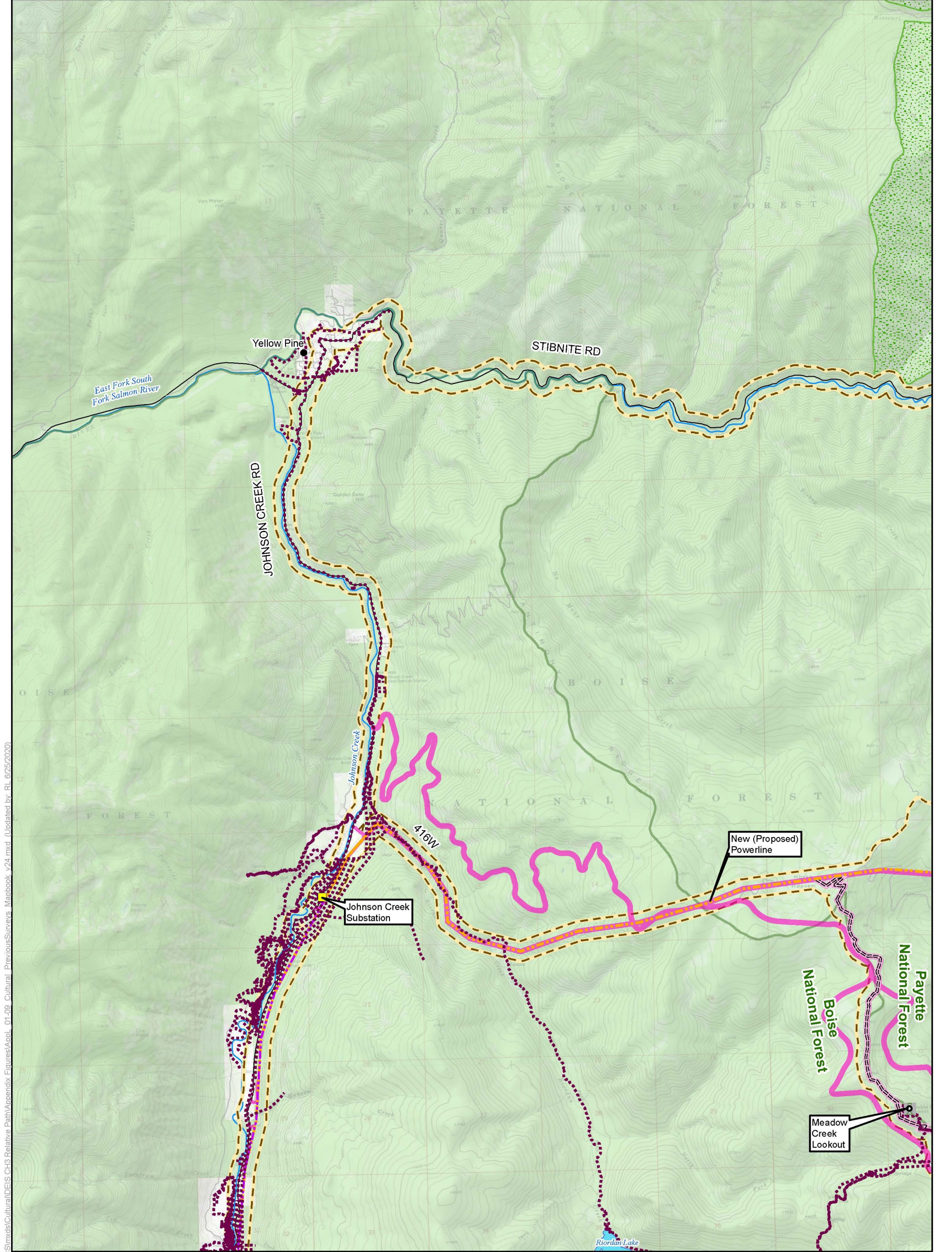


Previous Archaeological Survey Coverage within Cultural Resources Analysis Area Stibnite Gold Project Stibnite, ID

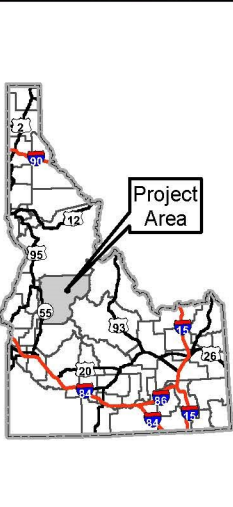
Figure 1 of 9

Base Layer: Copyright: © 2013 National Geographic Society, i-cubed
 USGS The National Map: 3D Elevation Program. USGS Earth Resources Observation & Science (EROS) Center: GMTED2010. Data refreshed: January, 2020
 CH3ac>Data_Sources_Midas_GoH_State_of_Idaho_Geospatial
 PAYETTE NATIONAL FOREST D: Boise National Forest, Payette Hillshac

Map Date: 6/25/2020

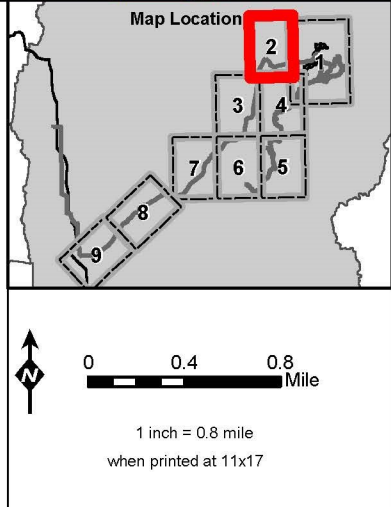


Document Path: M:\Denver_GIS\Projects\60539538_MidasGold\Stibnite\Appendix_Figures\Mapbook_v24.mxd (Updated by: RL 6/25/2020)



LEGEND

Cultural Resource Analysis Area	Burntlog Route Borrow Source ****	Monumental Summit	* Project Components are associated with Alternative 1 unless otherwise specified
Previously Surveyed Transects (As of Sept. 2019)	New Powerline	Historic NFS Administrative Site	
Previously Surveyed Areas (As of Sept. 2019)	Upgraded Powerline	Lookout	** Substation locations are approximate
Project Components *	New Substation **	Railroad	*** Not all legend features are visible on this page
Mine Site	Existing Substation **	Highway	Note: The McCall - Stibnite Road (CR 50-412) consists of Lick Creek Road, East Fork South Fork Salmon River Road (East Fork Road) and Stibnite Road
Access Roads and Trail System	New Communication Tower	Access Road	
Burntlog Route New	Existing Communication Tower	Road	
Burntlog Route Upgrade	Cell Tower Option	Stream/River	
Burntlog Road Riordan Creek Alternative Segment	Midas Gold Offsite Facility	Lake/Reservoir	
Groomed OSV Route	U.S. Forest Service	Surface Management Agency	
OHV Trail	Wilderness	Private	
Cell Tower Access	County	U.S. Forest Service	
	City/Town		



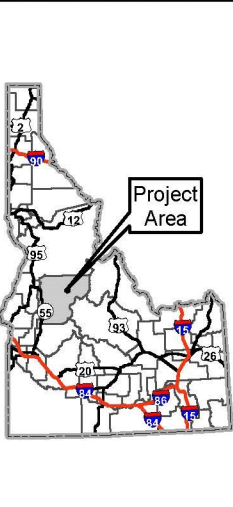
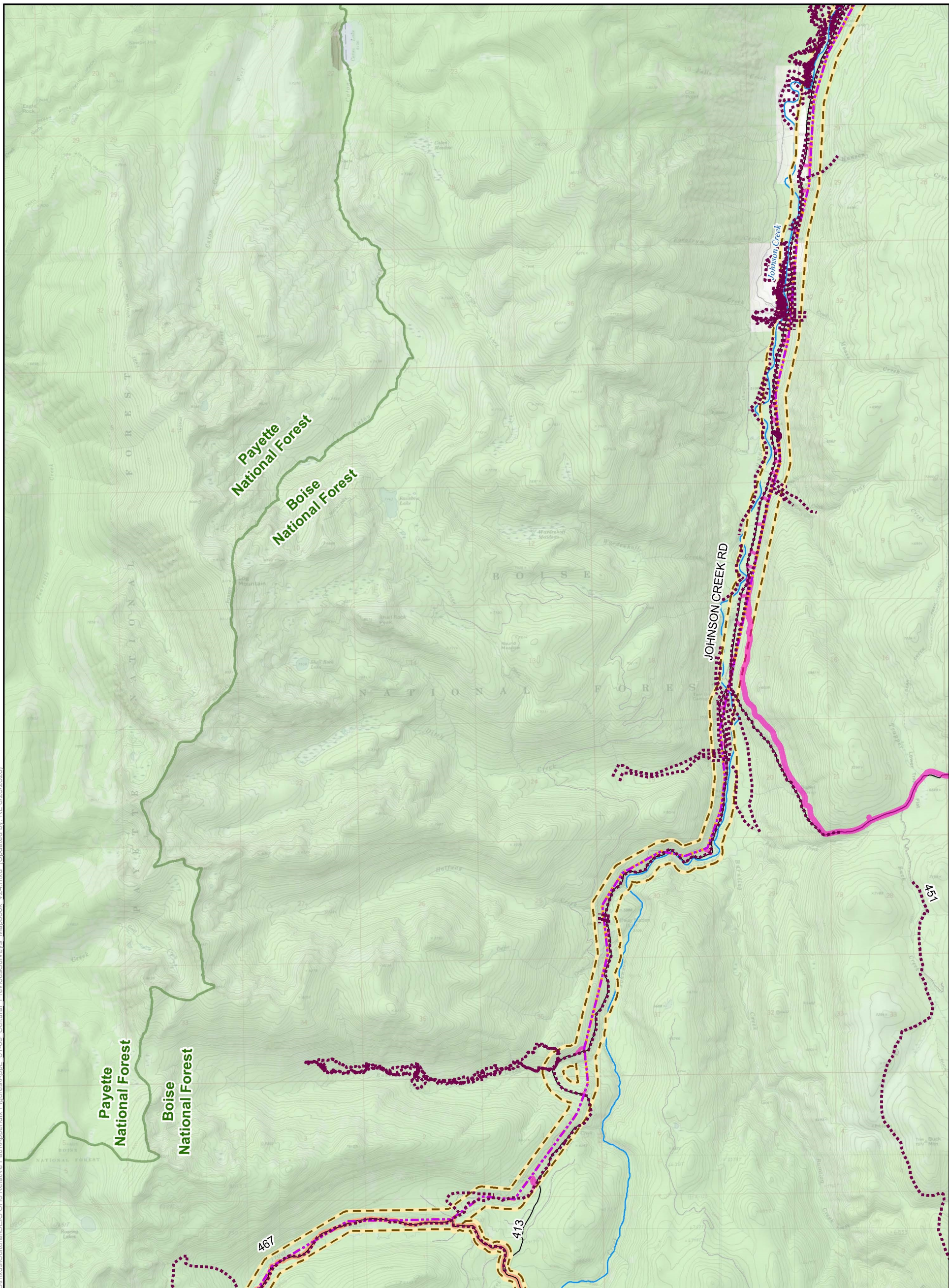
Previous Archaeological Survey Coverage within Cultural Resources Analysis Area Stibnite Gold Project Stibnite, ID

Figure 2 of 9

Base Layer: Copyright: © 2013 National Geographic Society, i-cubed
 USGS The National Map: 3D Elevation Program. USGS Earth Resources Observation & Science (EROS) Center: GMTED2010. Data refreshed January, 2020
 CH3ac>Data_Sources_Midas_GoH_State_of_Idaho_Geospatial
 NATIONAL FOREST D: Boise National Forest; Payette National Forest; Hillshac

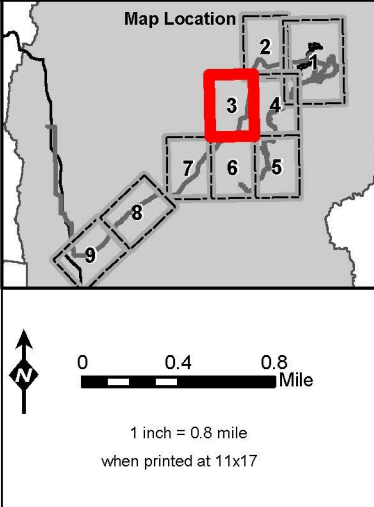
Map Date: 6/25/2020

Document Path: M:\Denver_GIS\Projects\60539538_MidasGold\Stibnite\Mapbook v24.mxd (Updated by: RL 6/25/2020)



LEGEND

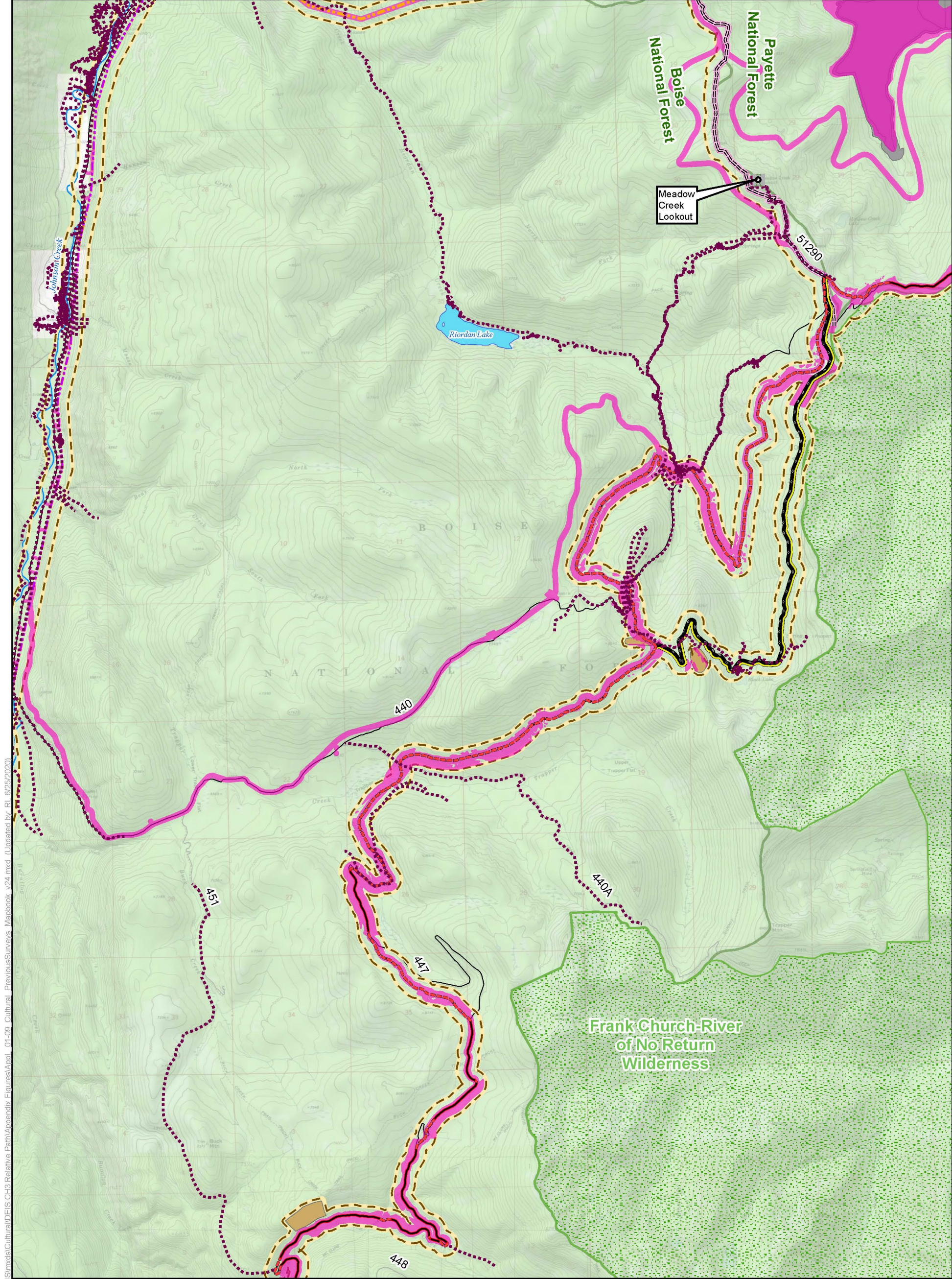
<ul style="list-style-type: none"> Cultural Resource Analysis Area Previously Surveyed Transects (As of Sept. 2019) Previously Surveyed Areas (As of Sept. 2019) <p>Project Components *</p> <ul style="list-style-type: none"> Mine Site <p>Access Roads and Trail System</p> <ul style="list-style-type: none"> Burntlog Route New Burntlog Route Upgrade Burntlog Road Riordan Creek Alternative Segment Groomed OSV Route OHV Trail Cell Tower Access 	<ul style="list-style-type: none"> Burntlog Route Borrow Source **** <p>Utilities</p> <ul style="list-style-type: none"> New Powerline Upgraded Powerline New Substation ** Existing Substation ** New Communication Tower Existing Communication Tower Cell Tower Option Midas Gold Offsite Facility <p>Other Features</p> <ul style="list-style-type: none"> U.S. Forest Service Wilderness County City/Town 	<ul style="list-style-type: none"> Monumental Summit Historic NFS Administrative Site Lookout Railroad Highway Access Road Road Stream/River Lake/Reservoir <p>Surface Management Agency</p> <ul style="list-style-type: none"> Private U.S. Forest Service 	<p>* Project Components are associated with Alternative 1 unless otherwise specified</p> <p>** Substation locations are approximate</p> <p>*** Not all legend features are visible on this page</p> <p>Note: The McCall - Stibnite Road (CR 50-412) consists of Lick Creek Road, East Fork South Fork Salmon River Road (East Fork Road) and Stibnite Road</p>
---	--	--	--



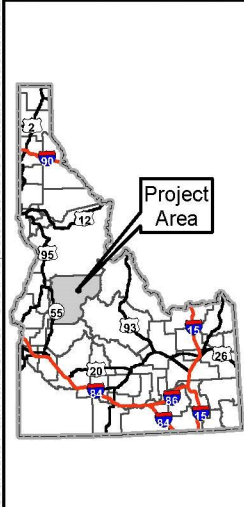
Previous Archaeological Survey Coverage within Cultural Resources Analysis Area Stibnite Gold Project Stibnite, ID

Figure 3 of 9

Base Layer: Copyright © 2013 National Geographic Society, i-cubed
 USGS The National Map: 3D Elevation Program. USGS Earth Resources Observation & Science (EROS) Center: GMTED2010. Data refreshed: January, 2020.
 CHM: Data Source: Midas GoH. State of Idaho Geospatial
 NATIONAL FOREST D: Boise National Forest; Payette Hillshac
 Map Date: 6/25/2020

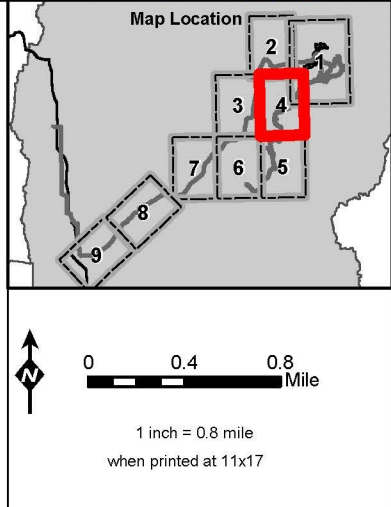


Document Path: M:\Denver_GIS\Projects\60539538_MidasGold\Stibnite\GIS\MapDocs\Cultural\DEIS\CH3\Relative_Path\Appendix_Figures\Appendix_01-09_Cultural_Preview\Surveys_Mapbook_v24.mxd (Updated by: RL 6/25/2020)



LEGEND

Cultural Resource Analysis Area	Burntlog Route Borrow Source ****	Monumental Summit	* Project Components are associated with Alternative 1 unless otherwise specified
Previously Surveyed Transects (As of Sept. 2019)	Utilities	Historic NFS Administrative Site	
Previously Surveyed Areas (As of Sept. 2019)	New Powerline	Lookout	*** Not all legend features are visible on this page
Project Components *	Upgraded Powerline	Railroad	Note: The McCall - Stibnite Road (CR 50-412) consists of Lick Creek Road, East Fork South Fork Salmon River Road (East Fork Road) and Stibnite Road
Mine Site	New Substation **	Highway	
Access Roads and Trail System	Existing Substation **	Access Road	
Burntlog Route New	New Communication Tower	Road	
Burntlog Route Upgrade	Existing Communication Tower	Stream/River	
Burntlog Road Riordan Creek Alternative Segment	Cell Tower Option	Lake/Reservoir	
Groomed OSV Route	Midas Gold Offsite Facility	Surface Management Agency	
OHV Trail	Other Features	U.S. Forest Service	
Cell Tower Access	Wilderness	Private	
	County	U.S. Forest Service	
	City/Town		

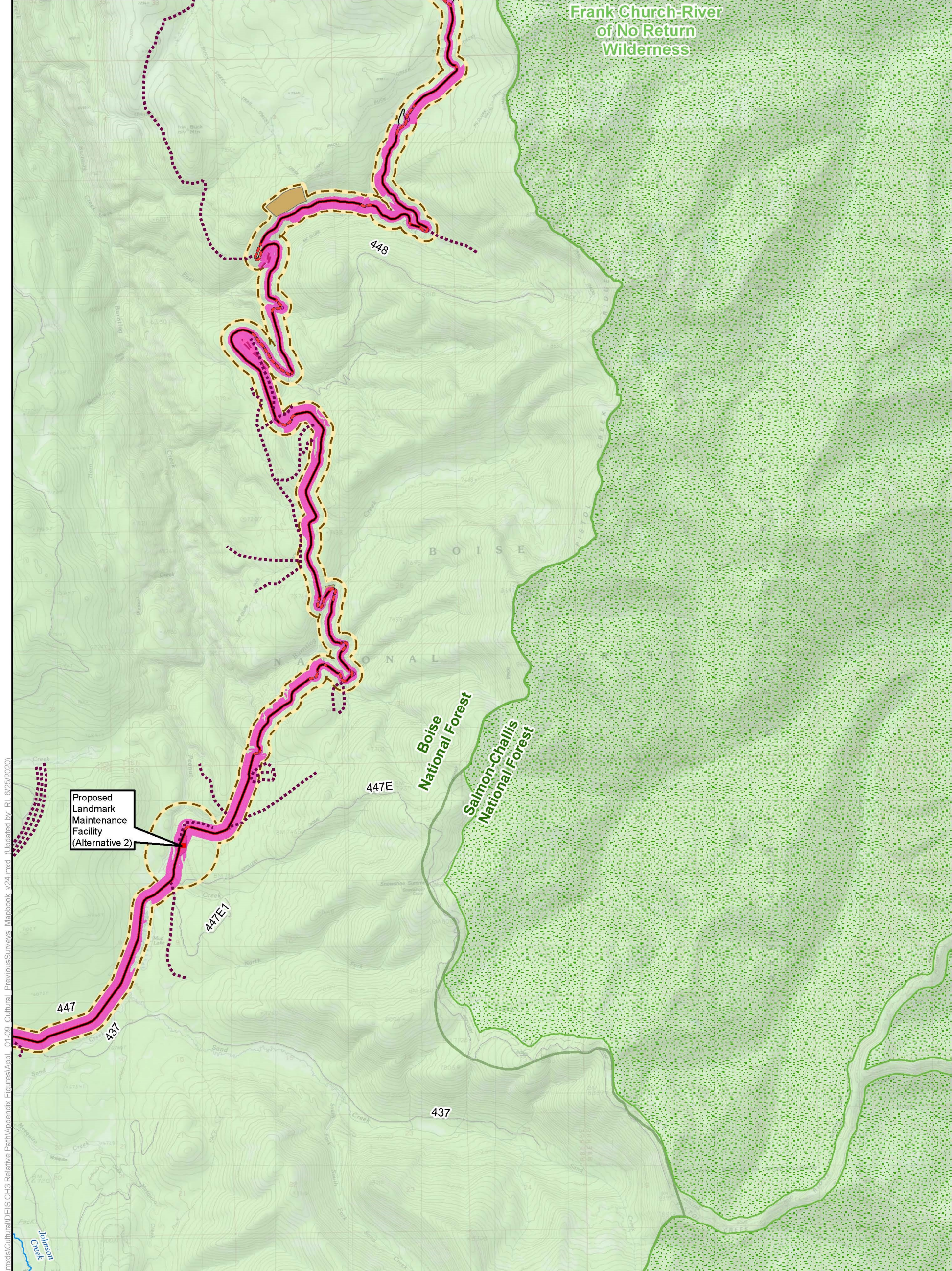


Previous Archaeological Survey Coverage within Cultural Resources Analysis Area Stibnite Gold Project Stibnite, ID

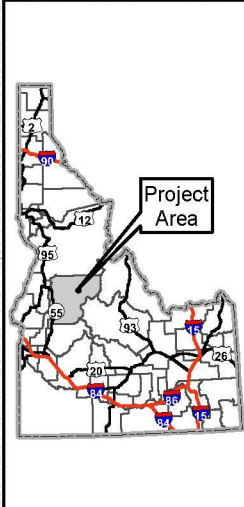
Figure 4 of 9

Base Layer: Copyright © 2013 National Geographic Society, i-cubed
 USGS The National Map: 3D Elevation Program. USGS Earth Resources Observation & Science (EROS) Center: GMTED2010. Data refreshed: January, 2020.
 CH3ac>Data_Sources_Midas_GoH_State_of_Idaho_Geospatial

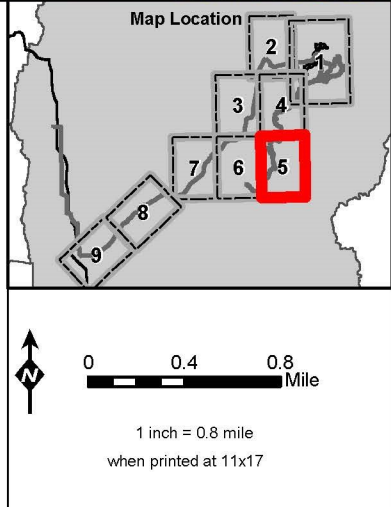
Map Date: 6/25/2020



Document Path: M:\Denver_GIS\Projects\60539538_MidasGold\Stibnite\CH3 Relative Path\Appendix Figures\Mapbook v24.mxd (Updated by: RL 6/25/2020)



LEGEND	
	Cultural Resource Analysis Area
	Previously Surveyed Transects (As of Sept. 2019)
	Previously Surveyed Areas (As of Sept. 2019)
Project Components *	
	Mine Site
Access Roads and Trail System	
	Burntlog Route New
	Burntlog Route Upgrade
	Burntlog Road Riordan Creek Alternative Segment
	Groomed OSV Route
	OHV Trail
	Cell Tower Access
	Burntlog Route Borrow Source ****
Utilities	
	New Powerline
	Upgraded Powerline
	New Substation **
	Existing Substation **
	New Communication Tower
	Existing Communication Tower
	Cell Tower Option
	Midas Gold Offsite Facility
Other Features	
	U.S. Forest Service
	Wilderness
	County
	City/Town
	Monumental Summit
	Historic NFS Administrative Site
	Lookout
	Railroad
	Highway
	Access Road
	Road
	Stream/River
	Lake/Reservoir
Surface Management Agency	
	U.S. Forest Service

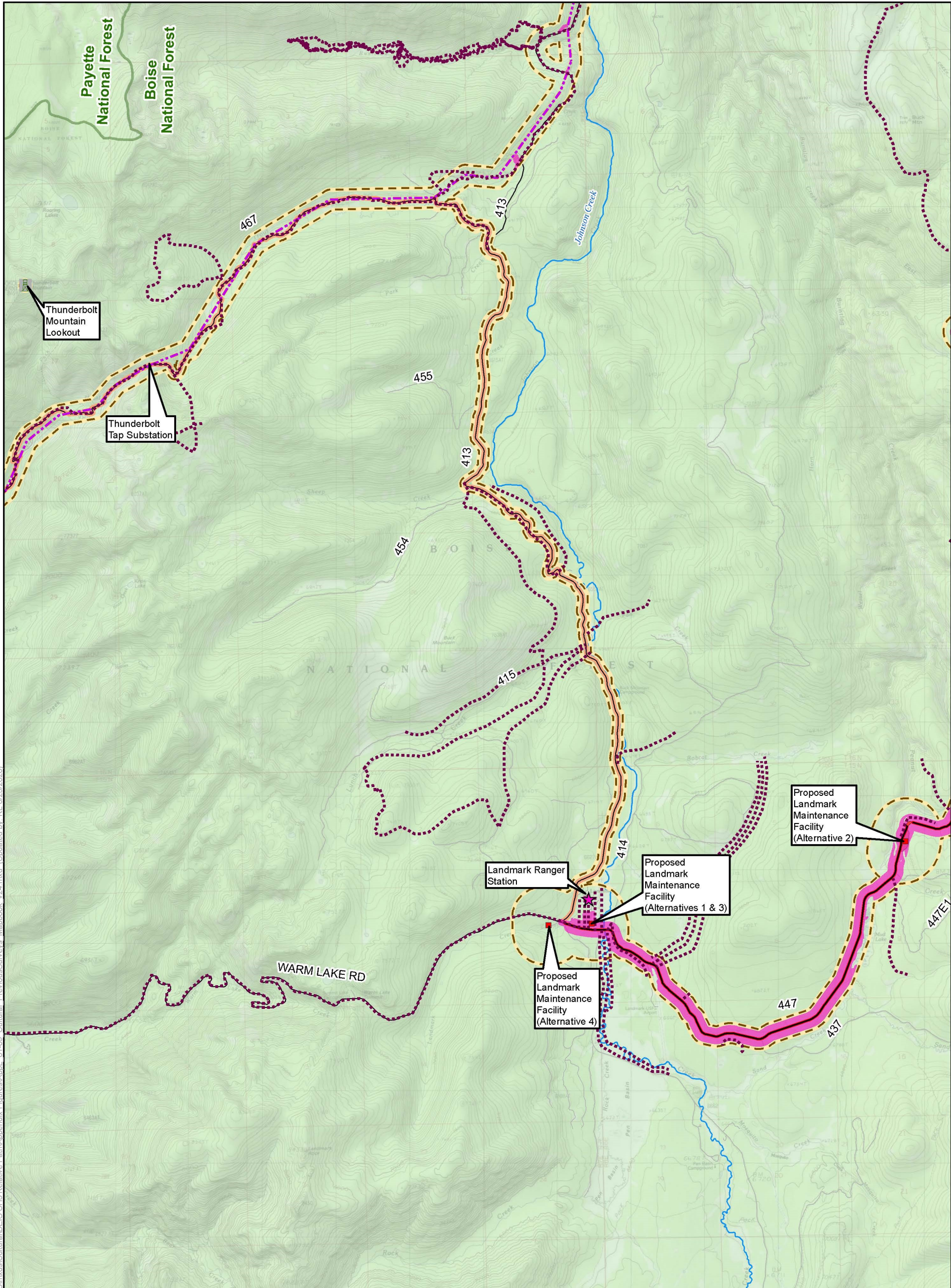


Previous Archaeological Survey Coverage within Cultural Resources Analysis Area Stibnite Gold Project Stibnite, ID

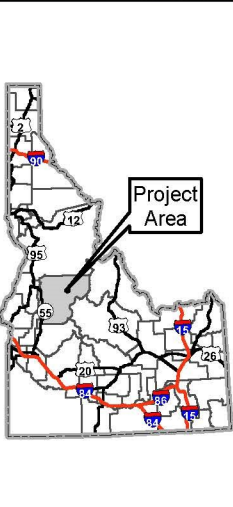
Figure 5 of 9

Base Layer: Copyright: © 2013 National Geographic Society, i-cubed
 USGS The National Map: 3D Elevation Program. USGS Earth Resources Observation & Science (EROS) Center: GMTED2010. Data refreshed: January, 2020.
 CH3ac>Data_Sources--Midas's GoH: State of Idaho Geospatial Information Institute
 NATIONAL FOREST D): Boise National Forest, Payette Hillshac
 U.S. Forest Service

Map Date: 6/25/2020

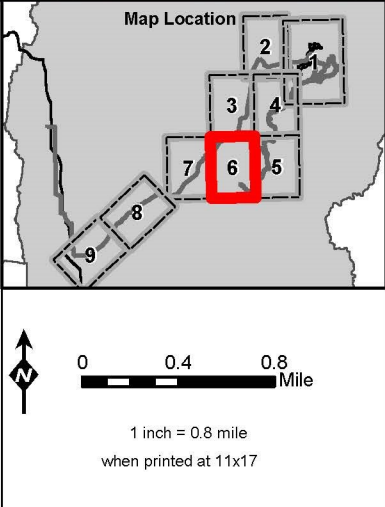


Document Path: M:\Denver_GIS\Projects\60539538_MidasGold\Stibnite\Mapbook v24.mxd (Updated by: RL 6/25/2020)



LEGEND

Cultural Resource Analysis Area	Burntlog Route Borrow Source ****	Monumental Summit	* Project Components are associated with Alternative 1 unless otherwise specified
Previously Surveyed Transects (As of Sept. 2019)	Utilities	Historic NFS Administrative Site	
Previously Surveyed Areas (As of Sept. 2019)	New Powerline	Lookout	*** Not all legend features are visible on this page
Project Components *	Upgraded Powerline	Railroad	Note: The McCall - Stibnite Road (CR 50-412) consists of Lick Creek Road, East Fork South Fork Salmon River Road (East Fork Road) and Stibnite Road
Mine Site	New Substation **	Highway	
Access Roads and Trail System	Existing Substation **	Access Road	
Burntlog Route New	New Communication Tower	Road	
Burntlog Route Upgrade	Existing Communication Tower	Stream/River	
Burntlog Road Riordan Creek Alternative Segment	Cell Tower Option	Lake/Reservoir	
Groomed OSV Route	Midas Gold Offsite Facility	Surface Management Agency	
OHV Trail	Other Features	U.S. Forest Service	
Cell Tower Access	Wilderness	U.S. Forest Service	
	County		
	City/Town		

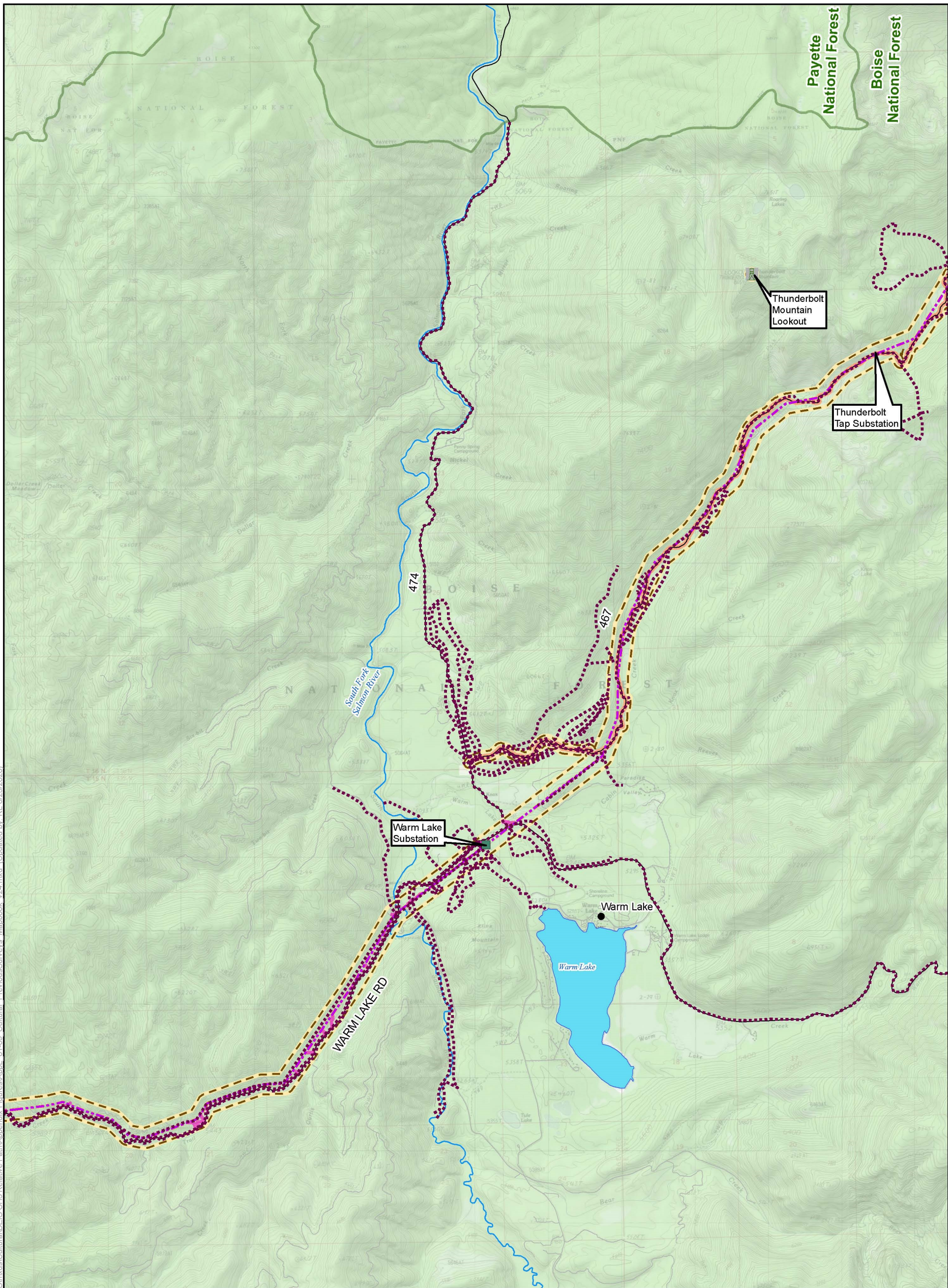


Previous Archaeological Survey Coverage within Cultural Resources Analysis Area Stibnite Gold Project Stibnite, ID

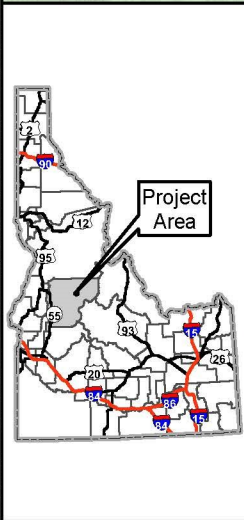
Figure 6 of 9

Base Layer: Copyright: © 2013 National Geographic Society, i-cubed
 USGS The National Map: 3D Elevation Program. USGS Earth Resources Observation & Science (EROS) Center: GMTED2010. Data refreshed January, 2020
 CH3ac>Data_Sources_Midas_GoH_State_of_Idaho_Geospatial

Map Date: 6/25/2020

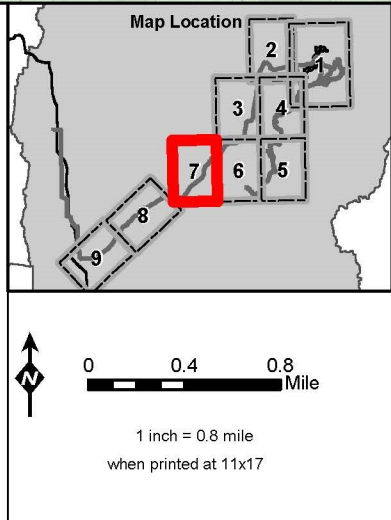


Document Path: M:\Denver_GIS\Projects\60539538_MidasGold\Stibnite\Mapbook v24.mxd (Updated by: RL 6/25/2020)



LEGEND

Cultural Resource Analysis Area	Burntlog Route Borrow Source ****	Monumental Summit	* Project Components are associated with Alternative 1 unless otherwise specified
Previously Surveyed Transects (As of Sept. 2019)	Utilities	Historic NFS Administrative Site	
Previously Surveyed Areas (As of Sept. 2019)	New Powerline	Lookout	** Substation locations are approximate
Project Components *	Upgraded Powerline	Railroad	*** Not all legend features are visible on this page
New Substation **	Existing Substation **	Highway	Note: The McCall - Stibnite Road (CR 50-412) consists of Lick Creek Road, East Fork South Fork Salmon River Road (East Fork Road) and Stibnite Road
Mine Site	New Communication Tower	Access Road	
Access Roads and Trail System	Existing Communication Tower	Road	
Burntlog Route New	Cell Tower Option	Stream/River	
Burntlog Route Upgrade	Midas Gold Offsite Facility	Lake/Reservoir	
Burntlog Road Riordan Creek Alternative Segment	Other Features	Surface Management Agency	
Groomed OSV Route	U.S. Forest Service	Private	
OHV Trail	Wilderness	U.S. Forest Service	
Cell Tower Access	County		
	City/Town		

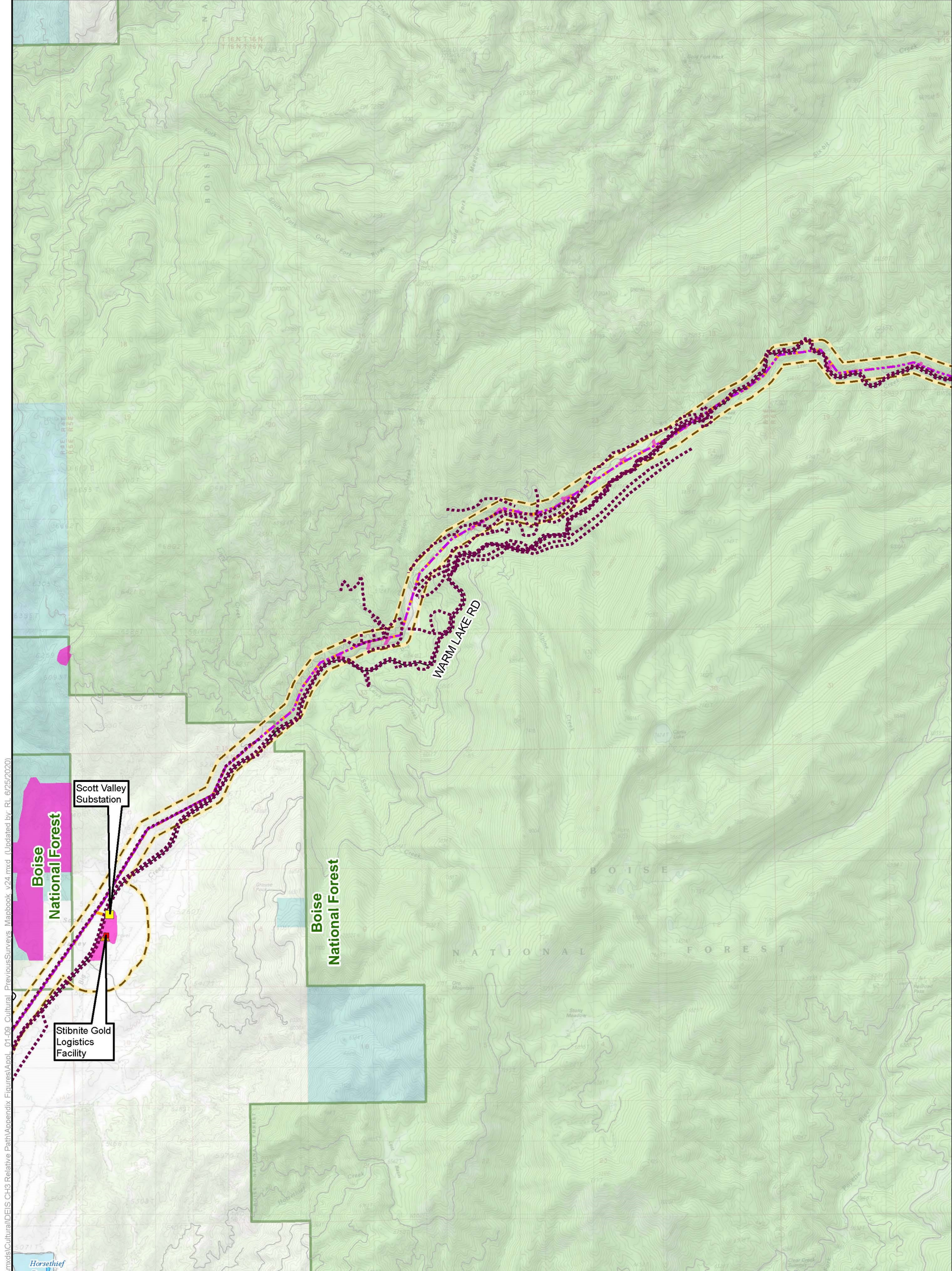


Previous Archaeological Survey Coverage within Cultural Resources Analysis Area Stibnite Gold Project Stibnite, ID

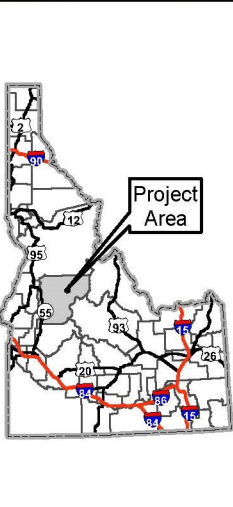
Figure 7 of 9

Base Layer: Copyright: © 2013 National Geographic Society, i-cubed
 USGS The National Map: 3D Elevation Program. USGS Earth Resources Observation & Science (EROS) Center: GMTED2010. Data refreshed: January, 2020.
 Data Source: Midas Go! - State of Idaho Geospatial

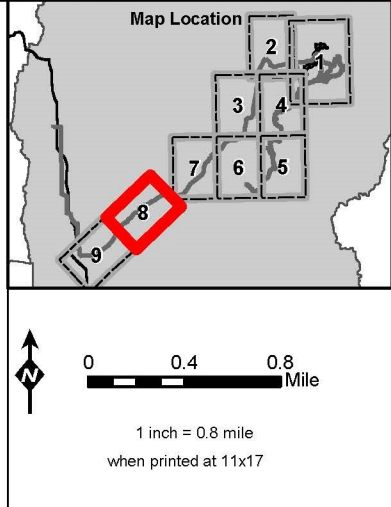
Map Date: 6/25/2020



Document Path: M:\Denver_GIS\Projects\60539538_MidasGold\Stibnite\CH3 Relative Path\Appendix Figures\Mapbook_v24.mxd (Updated by: RL 6/25/2020)



LEGEND	
	Cultural Resource Analysis Area
	Previously Surveyed Transects (As of Sept. 2019)
	Previously Surveyed Areas (As of Sept. 2019)
Project Components *	
	Mine Site
Access Roads and Trail System	
	Burntlog Route New
	Burntlog Route Upgrade
	Burntlog Road Riordan Creek Alternative Segment
	Groomed OSV Route
	OHV Trail
	Cell Tower Access
	Burntlog Route Borrow Source ****
Utilities	
	New Powerline
	Upgraded Powerline
	New Substation **
	Existing Substation **
	New Communication Tower
	Existing Communication Tower
	Cell Tower Option
	Midas Gold Offsite Facility
Other Features	
	U.S. Forest Service
	Wilderness
	County
	City/Town
	Monumental Summit
	Historic NFS Administrative Site
	Lookout
	Railroad
	Highway
	Access Road
	Road
	Stream/River
	Lake/Reservoir
Surface Management Agency	
	Private
	State
	State Fish and Game
	U.S. Forest Service

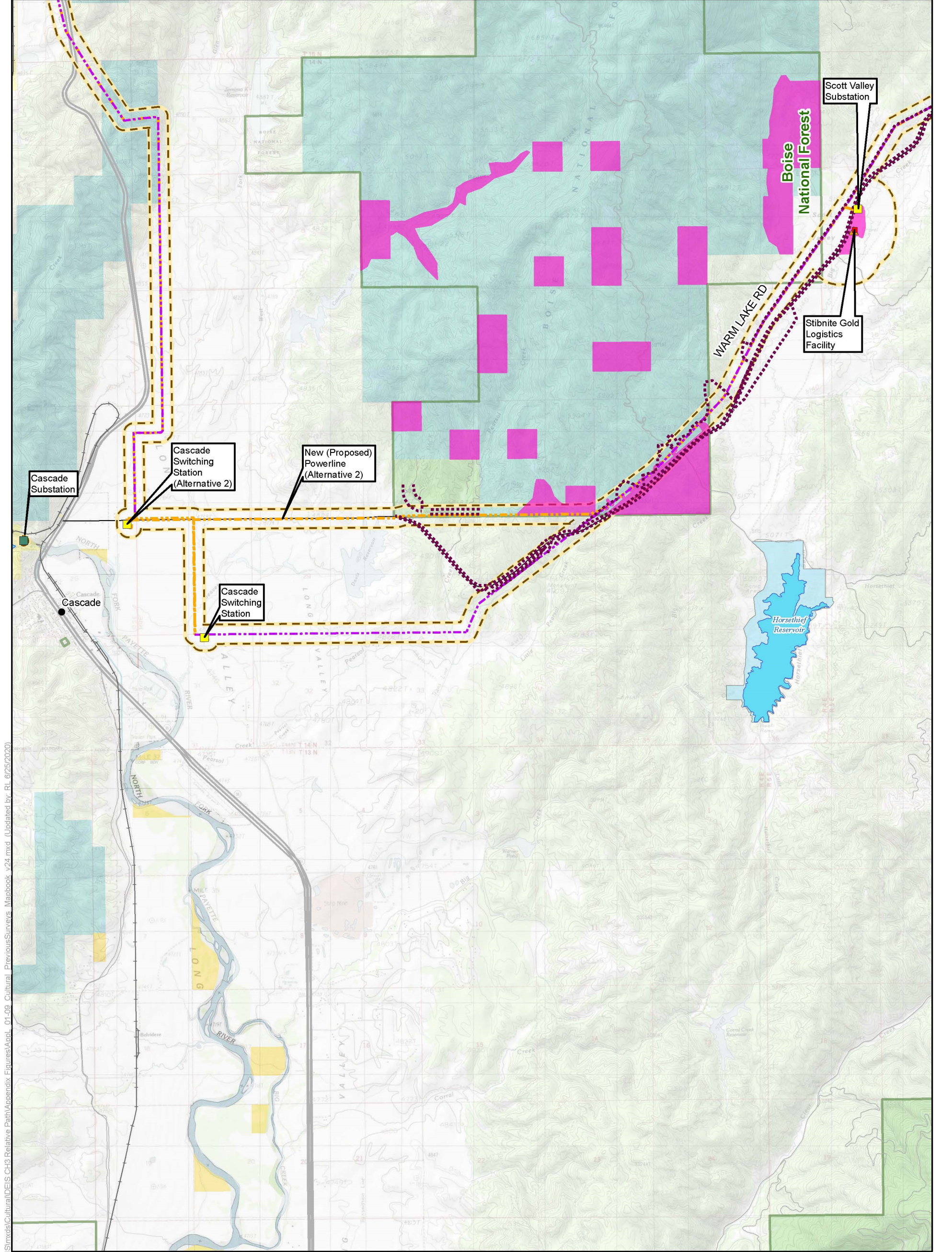


Previous Archaeological Survey Coverage within Cultural Resources Analysis Area Stibnite Gold Project Stibnite, ID

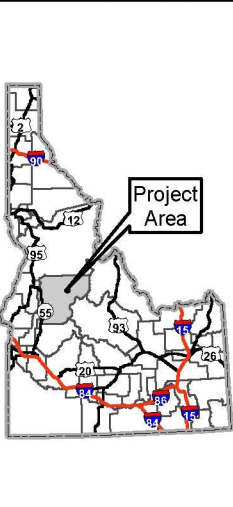
Figure 8 of 9

Base Layer: Copyright: © 2013 National Geographic Society, i-cubed
USGS The National Map: 3D Elevation Program. USGS Earth Resources Observation & Science (EROS) Center: GMTED2010. Data refreshed January, 2020
CH3ac>Data_Sources_Midas_GoH_State_of_Idaho_Geospatial
NATIONAL FOREST (D): Boise National Forest; Payette Hillshac
US Forest Service

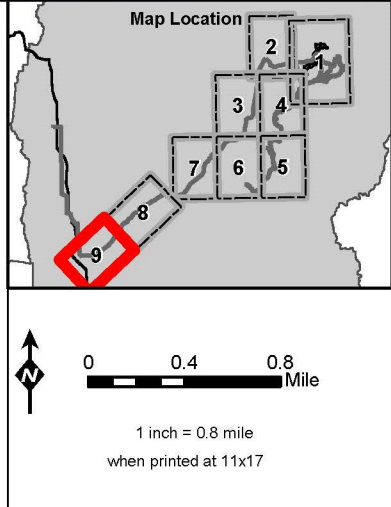
Map Date: 6/25/2020



Document Path: M:\Denver_GIS\Projects\60539538_MidasGold\Stibnite\Mapbook v24.mxd (Updated by: RL 6/25/2020)



LEGEND	
	Cultural Resource Analysis Area
	Previously Surveyed Transects (As of Sept. 2019)
	Previously Surveyed Areas (As of Sept. 2019)
Project Components *	
	Mine Site
Access Roads and Trail System	
	Burntlog Route New
	Burntlog Route Upgrade
	Burntlog Road Rioridan Creek Alternative Segment
	Groomed OSV Route
	OHV Trail
	Cell Tower Access
	Burntlog Route Borrow Source ****
Utilities	
	New Powerline
	Upgraded Powerline
	New Substation **
	Existing Substation **
	New Communication Tower
	Existing Communication Tower
	Cell Tower Option
	Midas Gold Offsite Facility
Other Features	
	U.S. Forest Service
	Wilderness
	County
	City/Town
	Monumental Summit
	Historic NFS Administrative Site
	Lookout
	Railroad
	Highway
	Access Road
	Road
	Stream/River
	Lake/Reservoir
Surface Management Agency	
	Bureau of Land Management
	Bureau of Reclamation
	Private
	State
	State Fish and Game
	U.S. Forest Service



Previous Archaeological Survey Coverage within Cultural Resources Analysis Area Stibnite Gold Project Stibnite, ID

Figure 9 of 9

Base Layer: Copyright: © 2013 National Geographic Society, i-cubed
 USGS The National Map: 3D Elevation Program. USGS Earth Resources Observation & Science (EROS) Center: GMTED2010. Data refreshed: January, 2020.
 Data Source: Midas Gold, State of Idaho Geospatial Data, National Forest, Boise National Forest, Payette National Forest, Hillshac

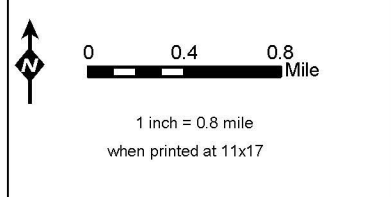
Map Date: 6/25/2020

* Project Components are associated with Alternative 1 unless otherwise specified

** Substation locations are approximate

*** Not all legend features are visible on this page

Note: The McCall - Stibnite Road (CR 50-412) consists of Lick Creek Road, East Fork South Fork Salmon River Road (East Fork Road) and Stibnite Road



This page intentionally left blank